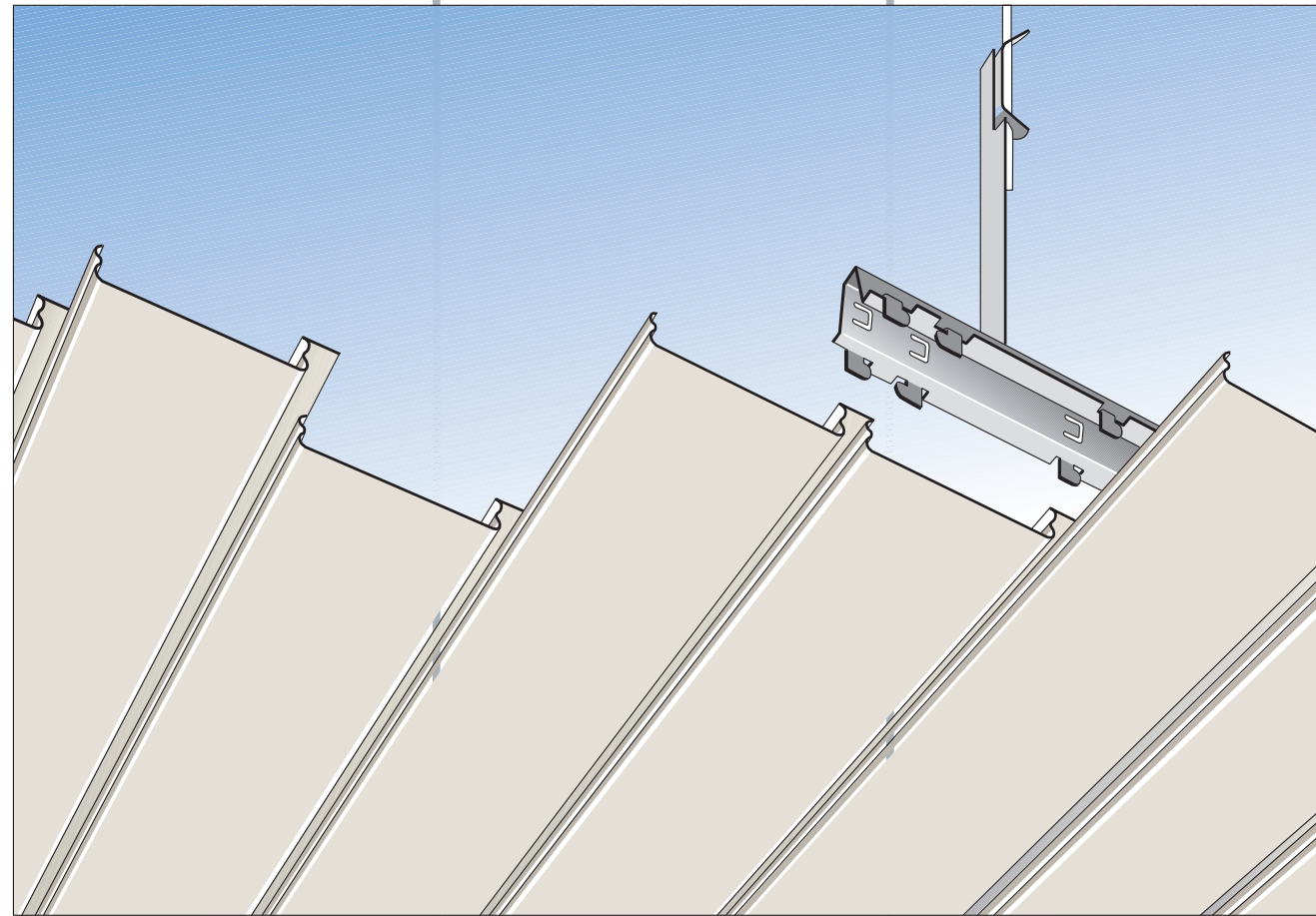




NordProfil

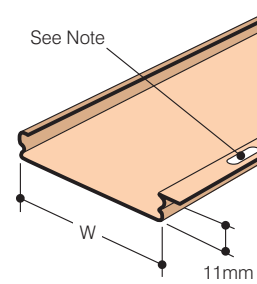
Fermulam H11

LINEAR METAL STRIP CEILING RANGE
(integral closed joint system)



Nord Profil Deutschland GmbH & Co. KG
Meteler Stiege 51-57
48565 Steinfurt
Germany
Tel.: (+49)-2551 864 600
Fax: (+49)-2551 864 6020
E-mail: info@nordprofil.com
Internet: www.nordprofil.com

1



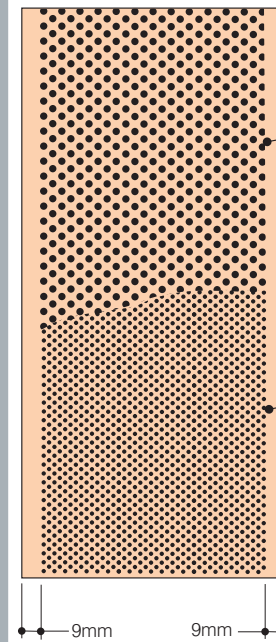
Cold roll formed aluminium or zinc coated mild steel in thicknesses shown in **Table 2**.
Standard finish: stove enamel polyester paint in matt, semi-gloss or full gloss (see colour chart).
Colours: standard as colour chart.
Special finishes: subject to minimum order quantity.
Standard length: to order between 1000mm min. and 5800mm max.

Note
Produced with 6mm x 22mm slots at 59mm centres for air distributing ceilings.

Table 2
Legend:

W = profile width mm
H = profile height mm
Al = aluminium thickness mm
St = steel thickness mm

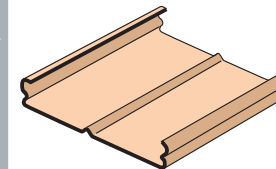
Ref.	W	H	Al	St
F 185H-11	185	11	0.6	0.5
F 135H-11	135	11	0.6	0.4
F 85H-11	85	11	0.5	0.4



STANDARD PERFORATION (zonal)
2mm diameter holes on diagonal grid 15% open area.

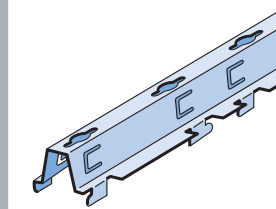
MICRO PERFORATION (zonal)
1.3mm diameter holes on diagonal grid 22% open area.

1A



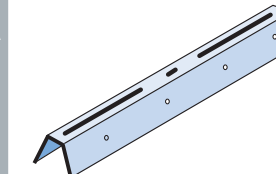
Splice channels for FERMULAM H-11 profiles, 125mm long, metal as profile.

2



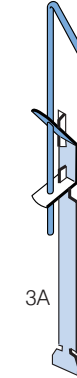
OMEGA carriers in cold roll formed 0.8mm thick aluminium or 0.6mm thick galvanised mild steel. Tongue spacings to suit FERMULAM H-11 profiles.
Standard finish: matt black polyester stove enamel paint.
Standard lengths: 4000mm.
Overall size: 25mm deep x 53mm wide.

2A



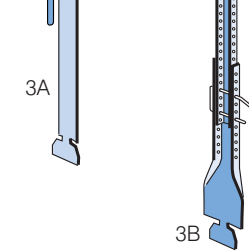
Channel coupler for OMEGA carriers in 0.6mm thick galvanised mild steel. Lengths to suit carriers. Finish as carrier.

3A



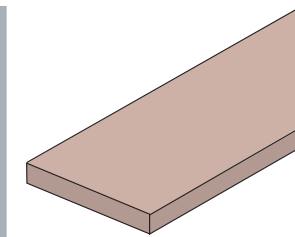
Butterfly suspension key hangers in 1.5mm thick galvanised mild steel, with spring clips and 4mm dia. rod.
Standard length: various between 125mm min. and 1000mm max. ceiling void depths.

3B



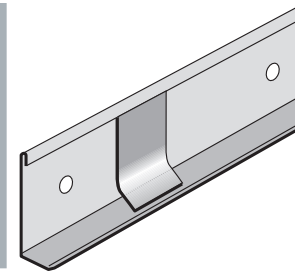
VERNIER hanger upper section in 1.0mm thick galvanised mild steel, paint finished, with 1.25mm thick galvanised mild steel bracket and 2.5mm dia. steel looped security pin.
Standard length: 2000mm upper section. VERNIER hanger has section edges vee notched to provide 'easy break' positions at 62mm centres.

4



Standard 25mm thick 45kg/m³ density rockwool or 20mm thick 20kg/m³ density glasswool, both with black tissue face. Also available encased in polythene, pvc or aluminium foil.

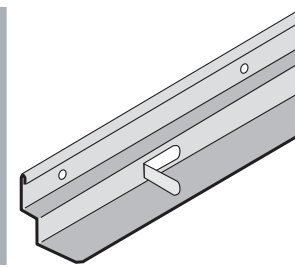
5



Perimeter angle trim in cold roll formed 0.8mm thick aluminium or 0.6mm thick galvanised mild steel.

Standard finish: white or black semi gloss stove enamel polyester paint.
Standard length: 4000mm.
Overall size: 40mm deep x 20mm wide.

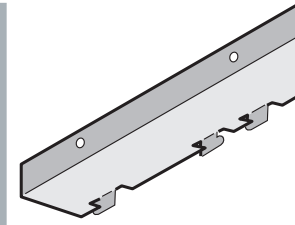
6



Perimeter shadow line angle trim in metal, finish and lengths as (5).

Overall size: 44mm deep x 36.5mm wide. Shadow gap width = 12.5mm

7



Wall carriers (LC) in cold roll formed metals as (2). Tongue spacings to suit FERMULAM H-11 profiles. Finish and lengths as (2).

Overall size: 20mm deep x 48mm wide.

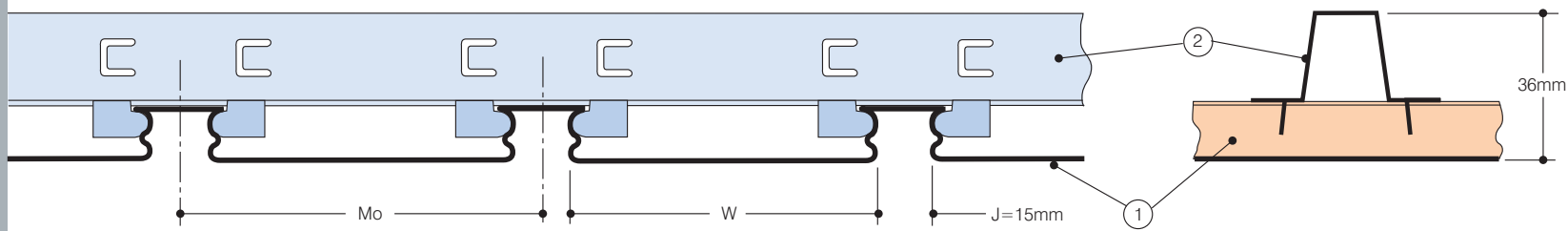


Fig.1 FERMULAM F85H-11 profile in cross section. scale 1:2

Fig.2 OMEGA carrier in cross section. scale 1:2

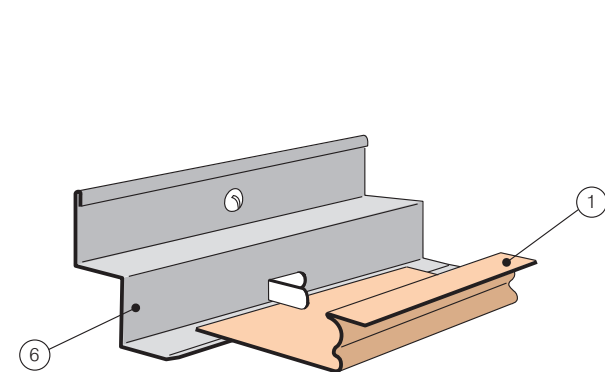


Fig.4 Perimeter angle with hold down tabs

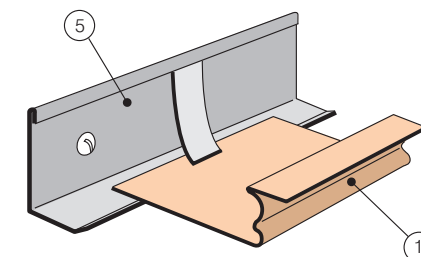
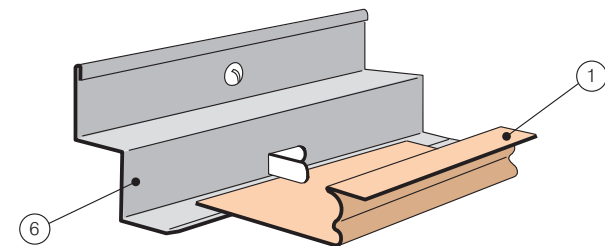


Fig.5 Perimeter angle with hold down clips

Suspended from the structural soffit by adjustable hangers (3A) (Fig. 3) or (3B) (see rear page) Omega carriers (2) (Figs. 1, 2, 3) contain preformed tongues in their base over which FERMULAM H-11 profiles (1) are clipped to make a secure attachment which, however, is capable of being disengaged by hand or tool.

Either of the perimeter angles (5) (Fig. 5) or (6) (Fig. 4) can be used to cloak the cut edges of FERMULAM H-11 profiles at walls and other abutments. The longitudinal edges are held down by clips on angle (5) and by pull out tabs on angle (6).

Wall carrier (7) (see rear page) supports the ends of profiles (1) when no cloaking angle is employed.

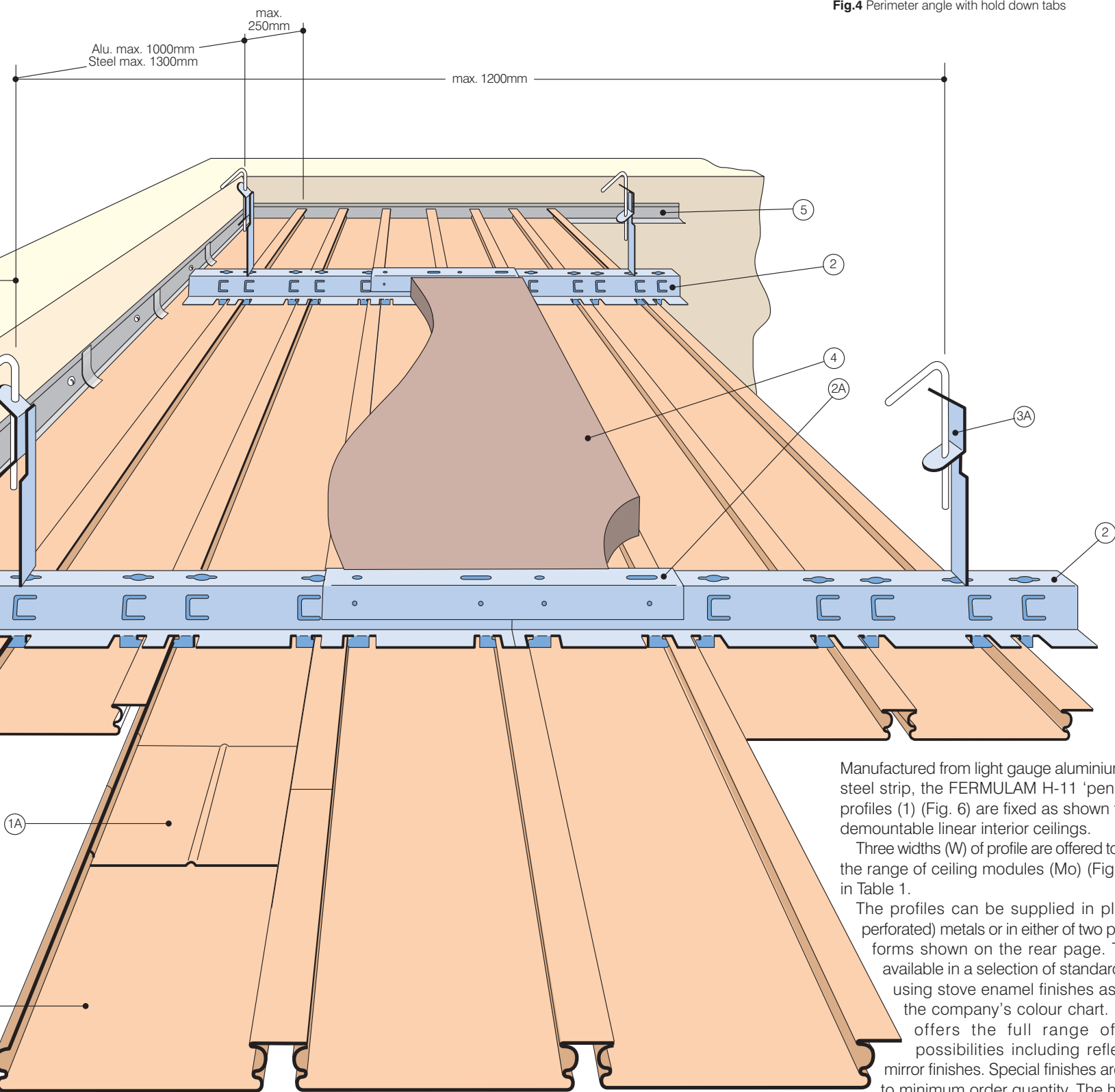


Fig.3 FERMULAM F85H-11 ceiling assembly with span data

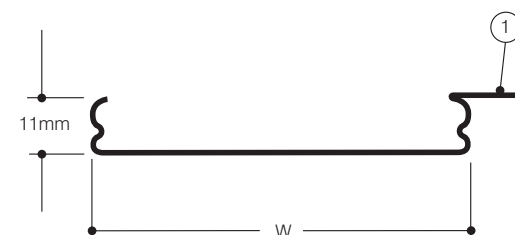


Fig.6 FERMULAM H-11 profile

Manufactured from light gauge aluminium or mild steel strip, the FERMULAM H-11 'pencil edge' profiles (1) (Fig. 6) are fixed as shown to create demountable linear interior ceilings.

Three widths (W) of profile are offered to facilitate the range of ceiling modules (Mo) (Fig. 1) seen in Table 1.

The profiles can be supplied in plain (non perforated) metals or in either of two perforated forms shown on the rear page. They are available in a selection of standard colours using stove enamel finishes as listed in the company's colour chart. F85H-11 offers the full range of colour possibilities including reflective or mirror finishes. Special finishes are subject to minimum order quantity. The horizontal projecting leg in the FERMULAM H-11 profiles integrally forms 15mm wide continuous closed

reveal joints (J) in the ceilings. This means that only those constructed from perforated profiles will act as sound absorbent membranes when overlaid with inert fibrous insulation materials (4) (Fig. 3). Plain profiles thus overlaid only provide a thermal insulating membrane. The projecting profile leg can incorporate slots so that FERMULAM H-11 installations can function as air distributing ceilings by allowing air to flow through the slots from a pressurised ceiling plenum. Sealed insulation material (4) must be used in the space between the slotted joints.

Fluorescent lighting fittings and spotlights are featured in section 6 of our technical manual, ceiling access panels on sheet 7.03. Please note that certified performance data are in section 8 and typical specification layout is on sheet 2.21.

Other FERMULAM products are featured on sheets 2.06/1, 2.06/2, 2.12, 2.12/1, 2.13 and 2.13/1.

Table 1 FERMULAM H-11 range of linear ceiling profiles.

Legend: Mo = ceiling module mm
Column entries are FERMULAM H11 profile code no's where W=85-135-185mm

Profile item no.	Mo = 100	Mo = 150	Mo = 200
1	F85H-11	F135-11	F185-11

Fermulam H-11